



D48 / ID48 - Matrix Signal Processor
Quick Start Guide

NST
AUDIO

www.nstaudio.com

© NST Audio Ltd 2015

To get the most out of your NST Audio D48 / ID48, please download the D-Net computer control software:

www.nstaudio.com



Computer Connection:

To interface with the NST Audio D48 / ID48, simply attach a standard CAT5 Ethernet cable to the Ethernet port on the rear of the unit – this can be done as a direct connection or through a hub / switch.

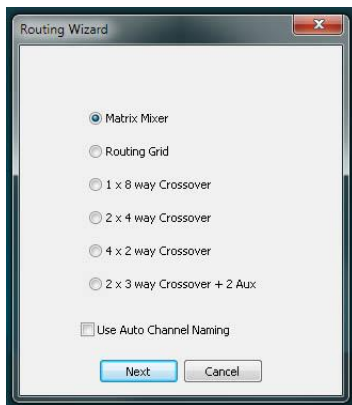
[There is no need to configure an interface or assign an ID number etc; if a DHCP server is available on the Ethernet network, the D-Net software will automatically locate and connect to any D48s on the system]

To connect to multiple D48s simultaneously, use a suitable Ethernet switch / hub and quality CAT5 patch cables. [USB connection will allow connection to a single D48 via a standard A-B USB cable from a D48/ID48 front panel.]

Open D-Net and press the online button



Connected D48s / ID48s will appear in the 'virtual rack' on the left in D-Net. Double click on the device in the rack to open its control panel.



To create a new crossover setup, go to the "System" page on the control panel and click on the "Routing Wizard" button. This will give a choice of standard and custom crossover setups:

Front Panel Control [D48 only]:

To access an input or output channel, simply press the corresponding Edit button.

Use the D-pad buttons to navigate the settings:

Up and Down to scroll through available parameters

Left and Right to scroll through / edit the current parameter

Use the rotary encoder to edit

The centre button acts as an Enter button to confirm any changes you may of made.

Each channel has its own local mute button – simply press a mute button to mute or un-mute the channel.

Meters:

Input:

6-segment [D48] or 4-segment [ID48] input LED meters show input level (pre-input gain and filters) respective to the maximum allowable input level of +22dB.

Output:

6-segment [D48] or 4-segment [ID48] output LED meters show the output level respective to the output limiter threshold. The +4 red LED denotes 4dB in to limiting.

Rear Panel Connection:

4 input / 8 output fully balanced analogue XLRs – digital connection is possible, but must be configured from the software.